

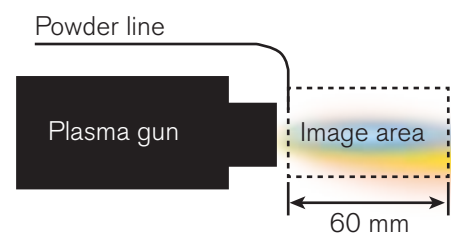
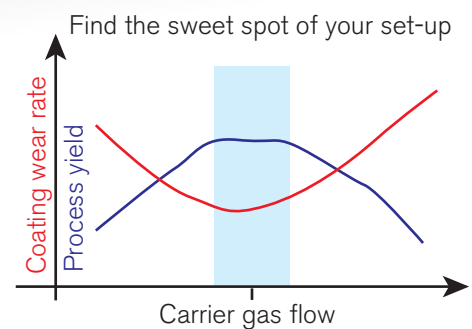
New concept in thermal spray diagnostics



Optimize your APS or wire-arc coating process:

- yield
- coating properties
- development effort
- production time

with this low-cost, camera-based thermal spray monitoring system.

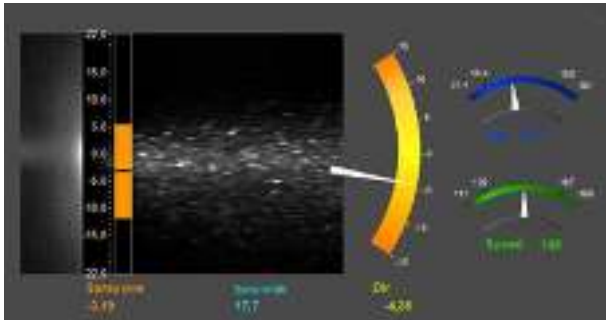


Application for diagnostics of radially inserted APS spray process

SprayWatch G

SprayWatch G

Diagnostics of thermal spray process was never this easy. Use SprayWatch G to optimize the spray operating parameters in an intuitive, quick and repeatable manner. Give instantaneous feedback to the operator for rapid adjustment of the process under variable environment, gun and feed line conditions.



How it works:

SprayWatch G camera system uses special optical filters to separate plasma flame and powder plume optical emission to facilitate analysis of respective emission features.

SprayWatch G will measure key properties of your process by combining features of plasma flame and powder plume to make a quick analysis of the system condition.

Measured properties:

- flame and plume geometry*
- position
- orientation
- fan angle
- particle flux
- particle velocity
- plasma brightness*

*only with APS

Regain control with
SprayWatch G



Optical and Spectroscopic Equipment for Industry and Research

Oseir Ltd.
Ahertajankatu 17
33720 Tampere
Finland

Tel. +358-40-7736 311
info@oseir.com
www.oseir.com

